



NP24-12R
NP24-12RFR

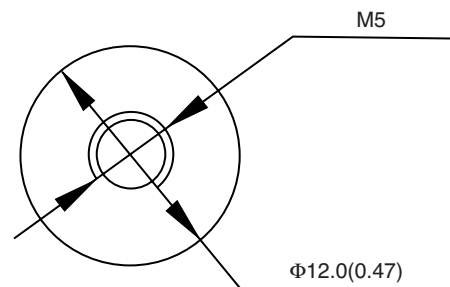
*Sealed Rechargeable
Lead-Acid Battery*

12V, 24Ah

Specifications

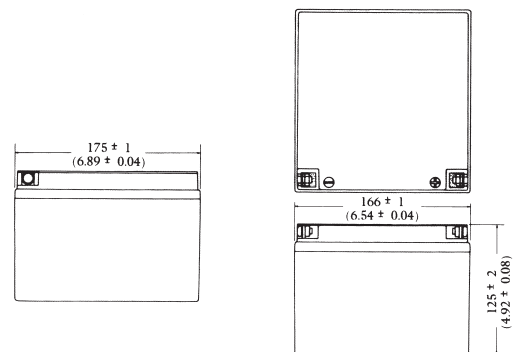
- **NOMINAL VOLTAGE:** 12V
- **NOMINAL CAPACITY:**
 - 20 hr. rate of 1.25A to 10.5V 25.0Ah
 - 10 hr. rate of 2.25A to 10.5V 22.5Ah
 - 5 hr. rate of 4.0A to 10.2V 20.0Ah
 - 1 hr. rate of 15.0A to 9.60V 15.0Ah
- **WEIGHT (approx.):** 19 pounds (8.8 Kg)
- **ENERGY DENSITY (20 hr. rate):** 1.35 WH/cubic inch (79 WH/liter)
- **SPECIFIC ENERGY (20 hr. rate):** 15.8 WH/pound (35 WH/Kg)
- **INTERNAL RESISTANCE OF CHARGED BATTERY:** 10 milliohms (approx.)
- **MAXIMUM DISCHARGE CURRENT WITH STANDARD TERMINALS:** 150 amperes
- **MAXIMUM SHORT-DURATION DISCHARGE CURRENT:** 500 amperes
- **OPERATING TEMPERATURE RANGE:**
 - CHARGE 5°F to 122°F (-15°C to 50°C)
 - DISCHARGE -4°F to 140°F (-20°C to 60°C)
- **CHARGE RETENTION (shelf life) at 68°F (20°C):**
 - 1 month 97%
 - 3 months 91%
 - 6 months 85%
- **LIFE EXPECTANCY:**
 - STANDBY USE 3 to 5 years
 - CYCLE USE (approx.):
 - 100% depth of discharge 250 cycles
 - 50% depth of discharge 550 cycles
 - 30% depth of discharge 1200 cycles
- **SEALED CONSTRUCTION:** Can be operated in any position without leakage.
- **STANDARD TERMINAL:** Receptacle M5
- **HOUSING MATERIAL:** ABS Resin
- **OPTIONAL:** Container and cover made from Flame Retardant ABS (UL94-V0/L.O.I.>28%)
- **HARDWARE:** 2-M5-.8 x 12mm Bolt w/ lock washer & flat washer

Terminal



DIMENSIONS: MM (INCHES)

Dimensions

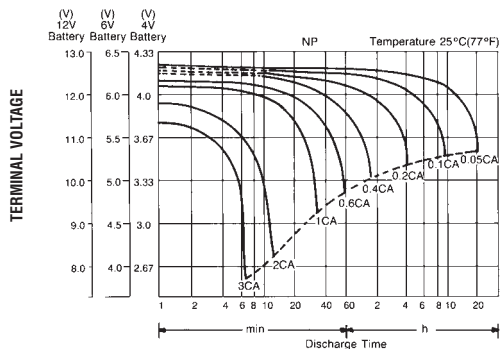


DIMENSIONS: MM (INCHES)

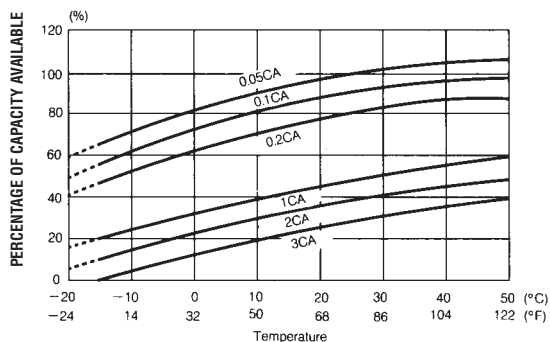
UL listing pending - File No MH16464



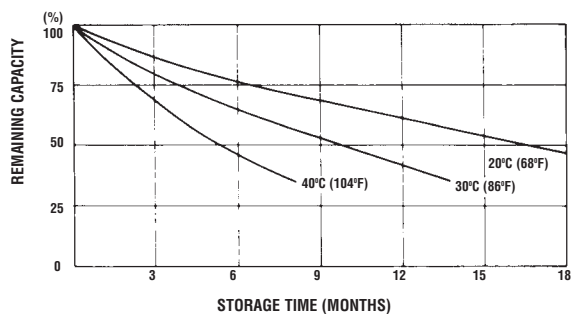
DISCHARGE CHARACTERISTIC CURVES AT 25°C (77°F)



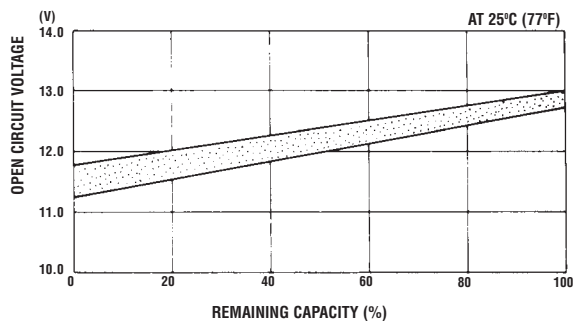
TEMPERATURE EFFECTS IN RELATION TO BATTERY CAPACITY



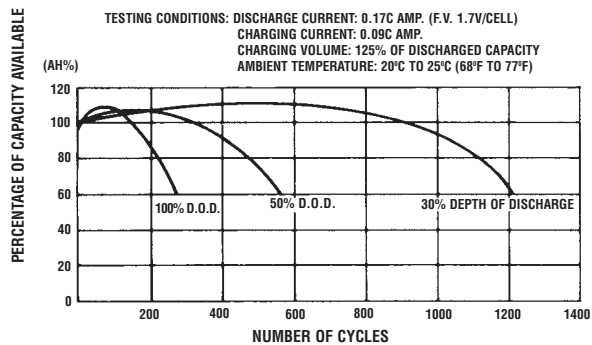
SELF DISCHARGE CHARACTERISTICS



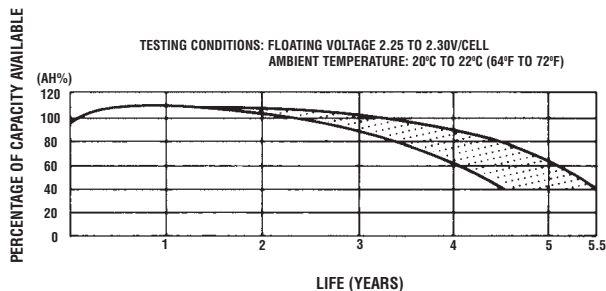
OPEN CIRCUIT VOLTAGE VS REMAINING CAPACITY



CYCLE SERVICE LIFE IN RELATION TO DEPTH OF DISCHARGE



FLOAT SERVICE LIFE



When the battery will be used by current in excess of 3C, consult with EnerSys prior to use.

CHARGING METHODS (At 20°C)

Cycle use: Maximum charging current 0.25C
Charging voltage 14.4 to 15.0V
Standby use: Float charging voltage 13.50 to 13.80V

CAUTION •Avoid short circuit
•Do not charge in a sealed container.



Global Headquarters
P.O. Box 14145
Reading, PA 19612-4145
USA
Tel: +1-610-208-1991
+1-800-538-3627
Fax: +1-610-372-8613

EnerSys EMEA
Brussels, Belgium
Tel: +32 (0)2 247 94 47
EnerSys Asia
Guangdong, China
Tel: +86-755-2689 3639

EnerSys Limited
Rake Lake,
Clifton Junction,
Swinton, Manchester
M27 8LR, UK
Tel: +44 (0) 161 794 4611
Fax: +44 (0) 161 727 3809

Represented by: